



50 Stimson Street Smithfield NSW

4  3  2 

50 STIMSON STREET, SMITHFIELD

High end design and modern luxury are uniquely incorporated in this 4 bedroom stunner. Presenting spacious living areas and sizeable bedrooms perfect for the growing family, as well as a stunning indoor / outdoor area for the ultimate entertainer. This one is ideal for first home buyers, upsizes or investors.

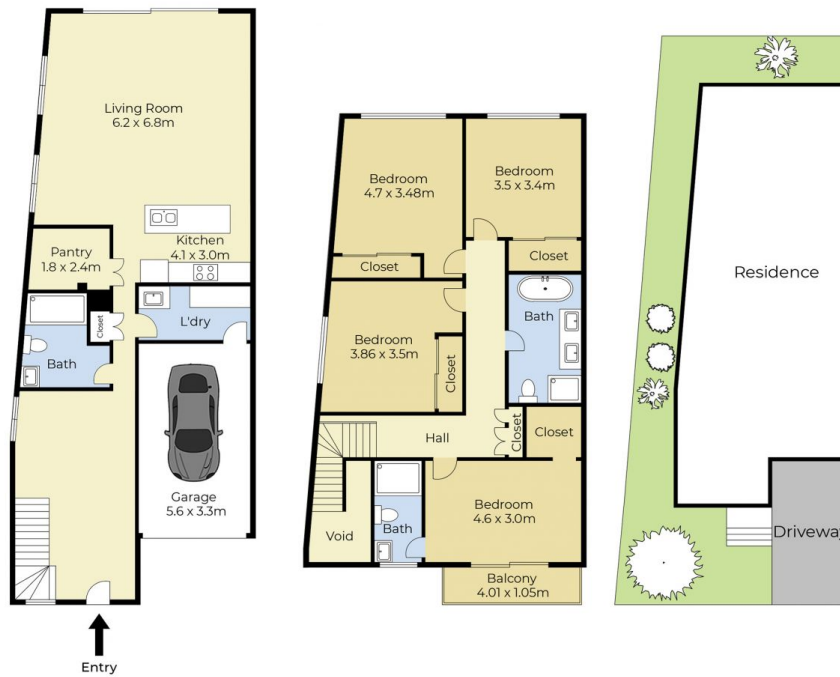
Features include:

- Spacious sun drenched lounge and dining area
- Designer kitchen with stainless steel appliances, luxurious island bench, gas stove and dishwasher

Price : \$ 933,000
Land Size : 215 sqm
View : <https://www.fletcherpg.com.au/sale/nsw/live-rpool-fairfield/smithfield/residential/semi-detached/7007054>



Daniel Fletcher
 (02)97198435



Ground Floor

First Floor

Site Plan



50 Stimson St, Smithfield

LIVING AREA: 186 SQM APPROX
LAND SIZE: 216 SQM APPROX



Disclaimer: Hu Studios accepts no liability for the accuracy of details contained within our floor plans. All plans are drawn and also checked to the best of our ability, however information contained in our floor plans such as area calculations are approximate, and have not been surveyed or drawn to scale. Our floor plans are for representational purposes only and should be used as such. Do not attempt to refer to our floor plans for structural or detailed information.